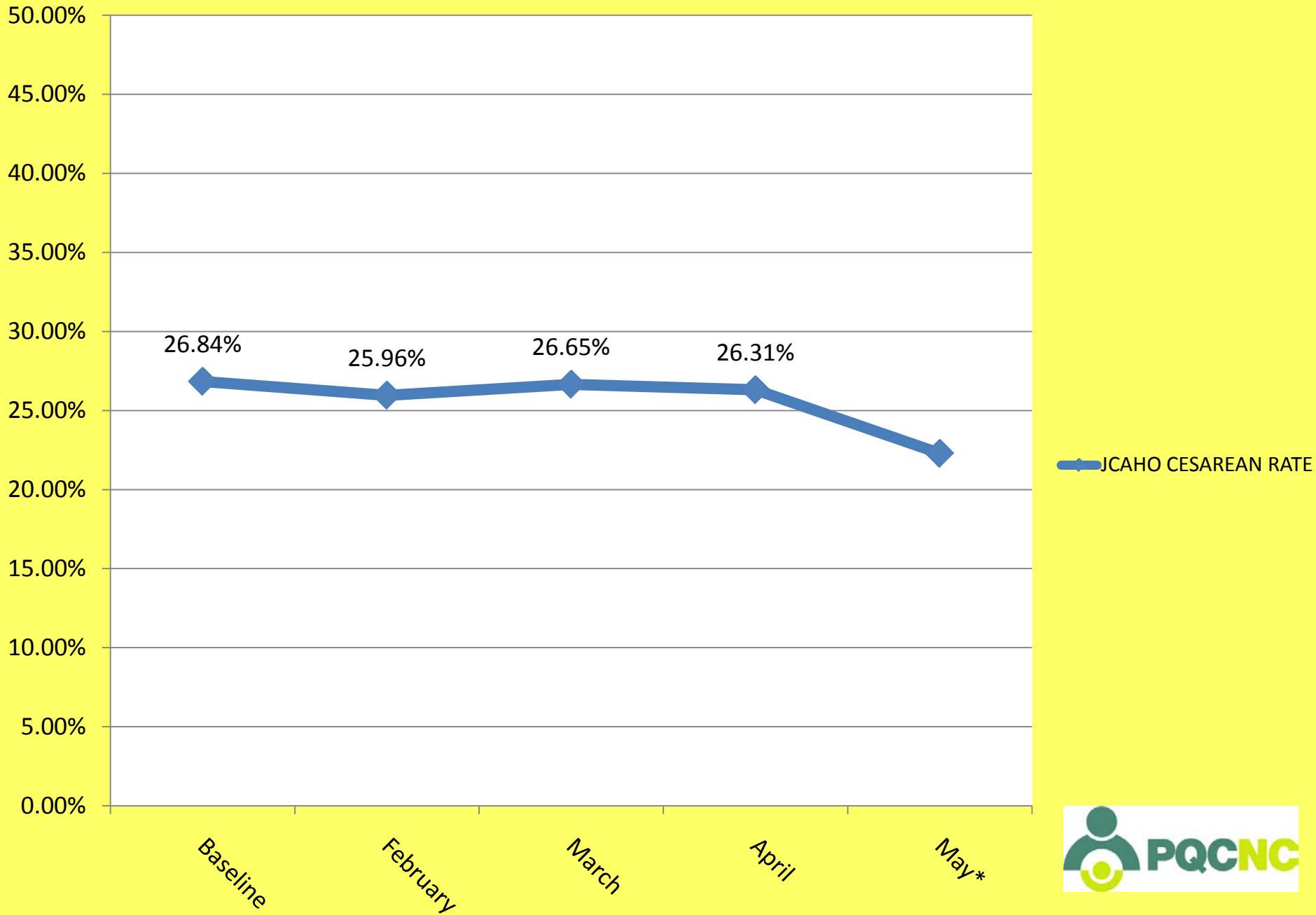




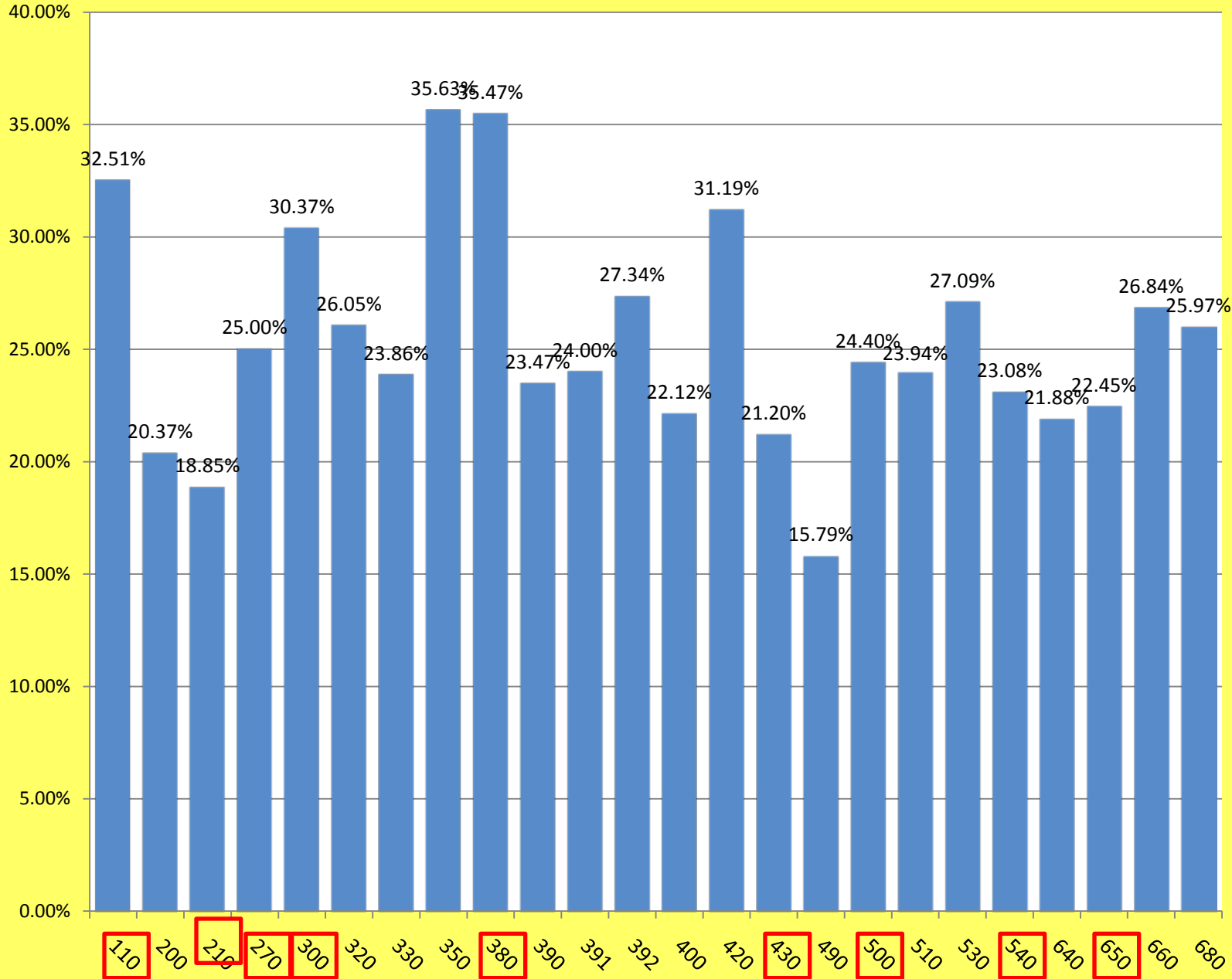
SIVB Data Overview

June 2011 update – what is the data telling is so far?

JCAHO CESAREAN RATE



JCAHO C/S RATE BY FACILITY ALL DATA



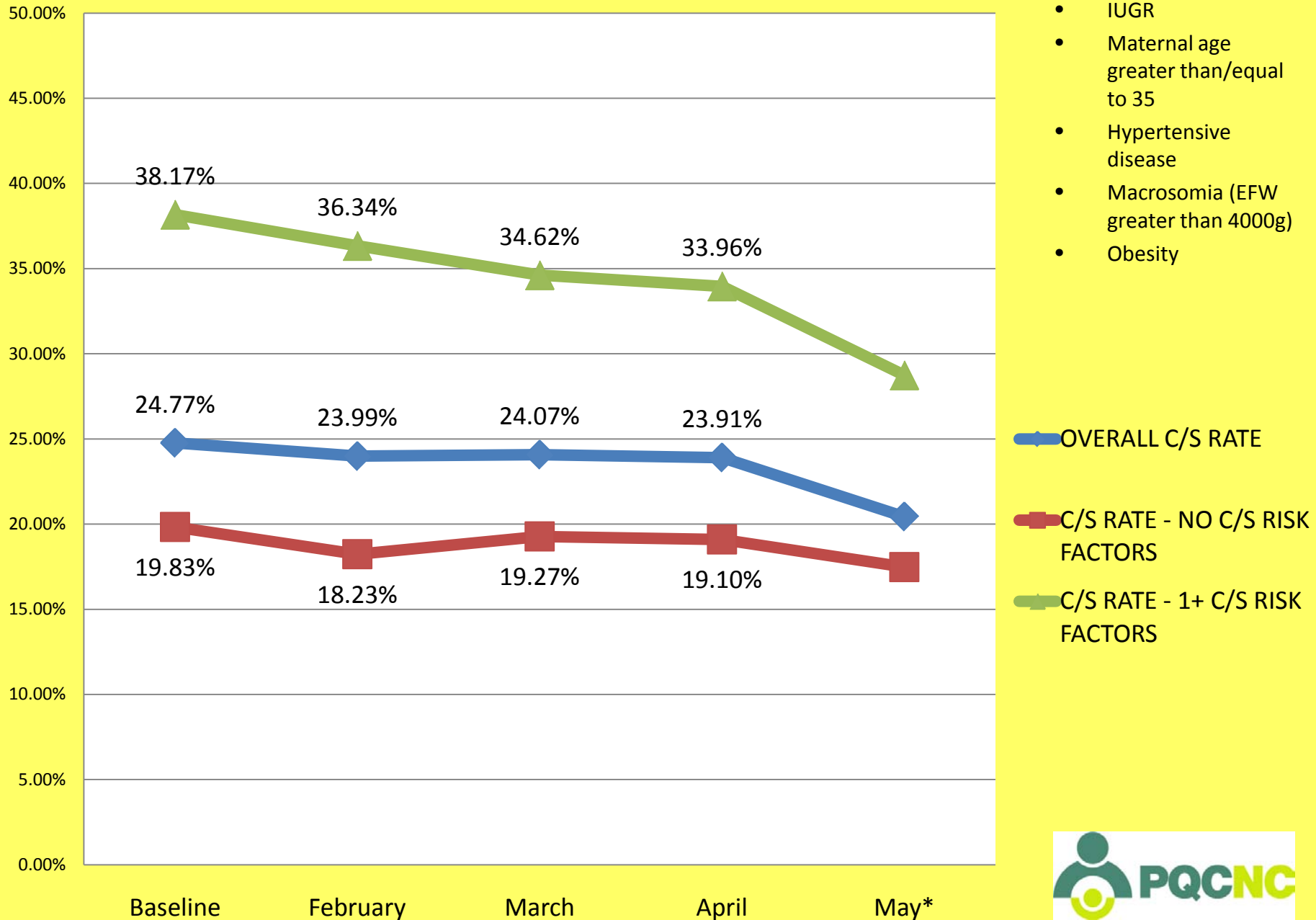
JCAHO C/S RATE
BY FACILITY
ALL DATA

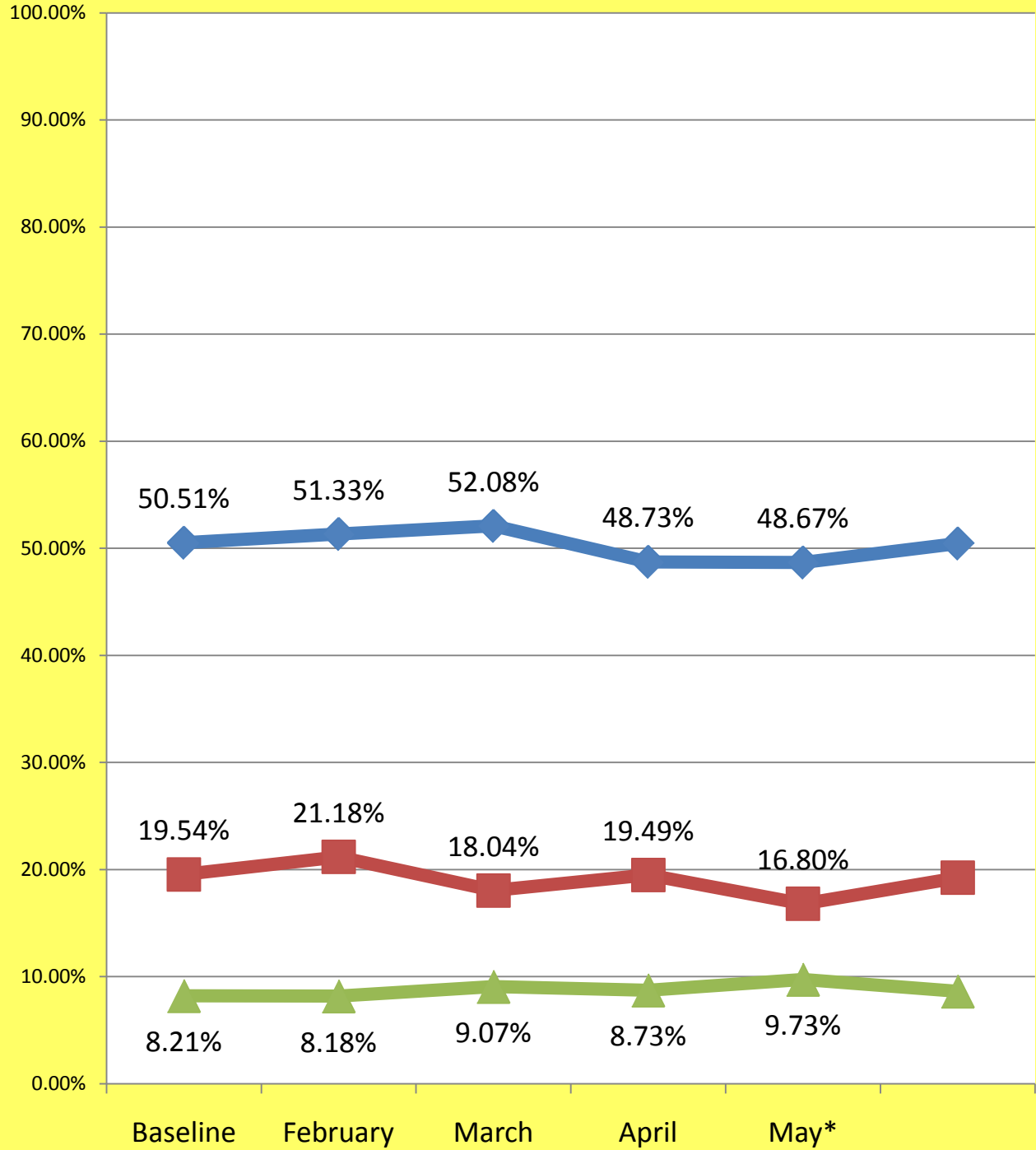


FACILITY #	Overall VBR	VBR for pts with no c/s risk factors	VBR for pts with 1+ c/s risk factors
380	68.23%	72.36%	60.87%
110	71.54%	74.74%	63.01%
300	70.28%	75.46%	53.06%
350	67.74%	76.32%	43.90%
392	74.81%	77.78%	62.96%
640	79.37%	79.38%	79.31%
680	76.57%	79.41%	66.67%
420	72.79%	79.50%	60.73%
500	77.23%	79.65%	71.72%
660	74.00%	81.08%	61.72%
320	74.54%	81.72%	54.08%
390	76.53%	81.76%	54.05%
530	77.49%	81.94%	63.83%
210	82.16%	82.08%	82.22%
391	77.16%	82.54%	67.61%
270	77.63%	82.88%	68.29%
510	80.60%	83.33%	69.23%
200	81.13%	83.44%	73.47%
540	80.17%	83.73%	71.83%
650	78.51%	84.71%	63.89%
430	80.00%	84.72%	67.29%
400	78.64%	85.37%	52.38%
490	85.71%	88.64%	75.00%
330	80.72%	89.71%	40.00%

CESAREAN RATES

- Diabetes (any type)
- IUGR
- Maternal age greater than/equal to 35
- Hypertensive disease
- Macrosomia (EFW greater than 4000g)
- Obesity





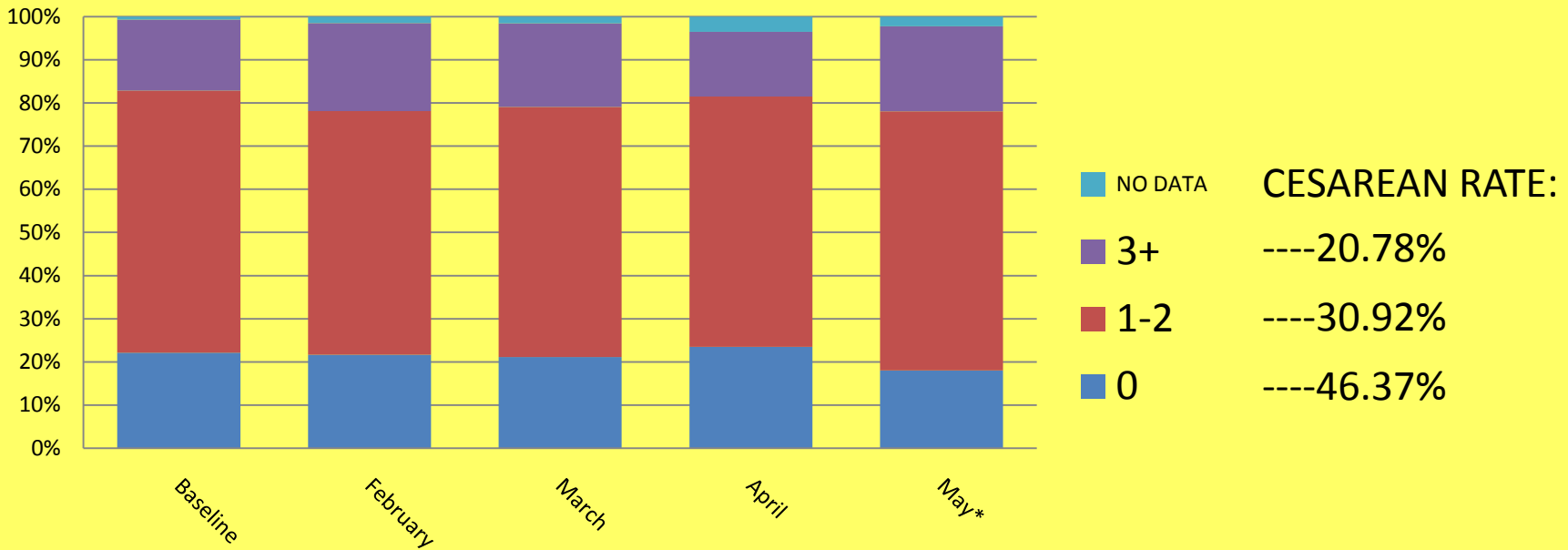
- ◆ % OF PTS NOT IN LABOR AT ADMISSION
- % OF PTS NOT IN LABOR AND NOT SCHEDULED INDUCTION AT ADMISSION
- ▲ % OF PTS NOT IN LABOR AND >41WKS

CESAREAN RATE FOR PTS NOT IN LABOR AT ADMISSION:
32.9%

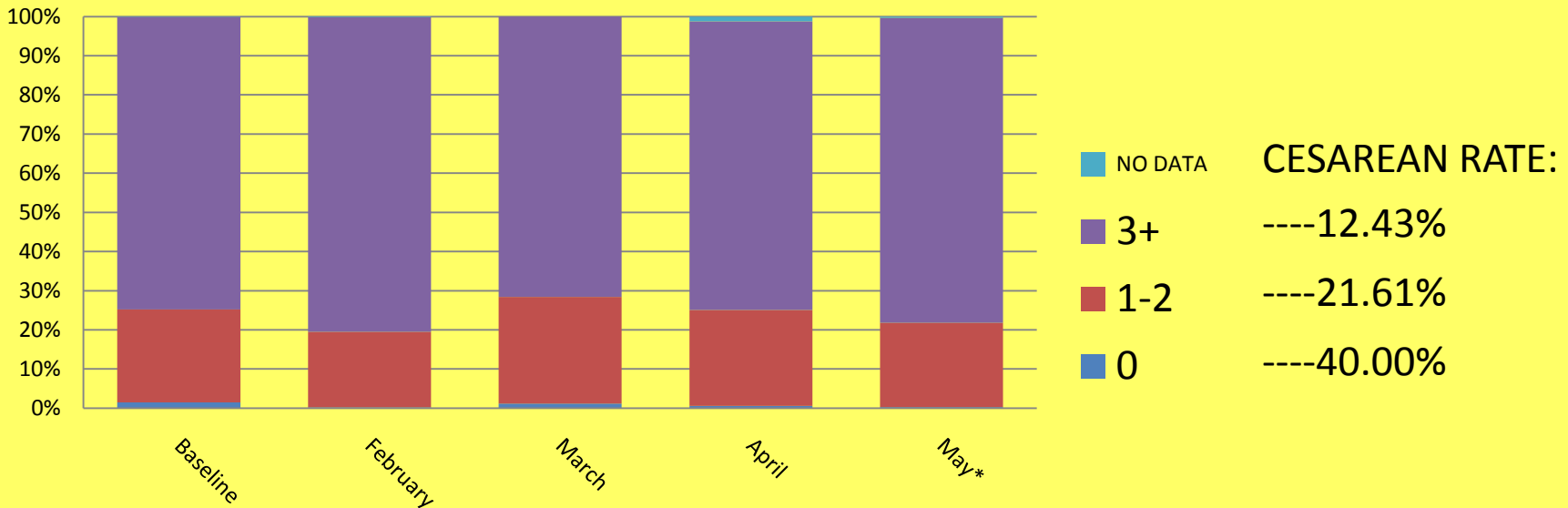
CESAREAN RATE FOR PTS IN LABOR AT ADMISSION:
14.9%



CERVICAL DILATION AT ADMISSION - NOT IN LABOR



CERVICAL DILATION AT ADMISSION - IN LABOR



	<41 Weeks / >41 Weeks					
	Pts <41 Weeks, No PROM			Pts >41 Weeks, No PROM		
Dilation at admission	%	n	C/S rate	%	n	C/S rate
0 cm	12.12%	429	49.88%	16.53%	102	40.20%
1-2 cm	36.77%	1302	29.26%	54.46%	336	31.55%
3+ cm	50.04%	1772	12.64%	28.20%	174	23.56%

	Labor Pts <41 Weeks, No PROM			Labor Pts >41 Weeks, No PROM		
0 cm	0.77%	14	35.71%	2.35%	4	50.00%
1-2 cm	19.24%	349	23.21%	24.12%	41	21.95%
3+ cm	79.55%	1443	11.23%	72.94%	124	19.35%

	Non-Labor Pts <41 Weeks, No PROM			Non-Labor Pts >41 Weeks, No PROM		
0 cm	24.03%	415	50.36%	21.92%	98	39.80%
1-2 cm	55.18%	953	31.48%	66.00%	295	32.88%
3+ cm	19.05%	329	18.84%	11.19%	50	34.00%

	No Risk Factors / Risk Factors					
	No Risk Factors, No PROM			Risk Factors, No PROM		
Dilation at admission	%	n	C/S rate	%	n	C/S rate
0 cm	5.60%	233	37.34%	7.17%	298	56.38%
1-2 cm	24.43%	1016	26.48%	14.96%	455	35.05%
3+ cm	37.52%	1560	11.60%	9.28%	386	21.76%

	Labor Pts, No Risk Factors, No PROM			Labor Pts, Risk Factors, No PROM		
0 cm	0.50%	10	60.00%	0.40%	8	12.50%
1-2 cm	15.57%	309	21.36%	4.08%	41	29.63%
3+ cm	66.28%	1315	10.42%	12.70%	252	19.44%

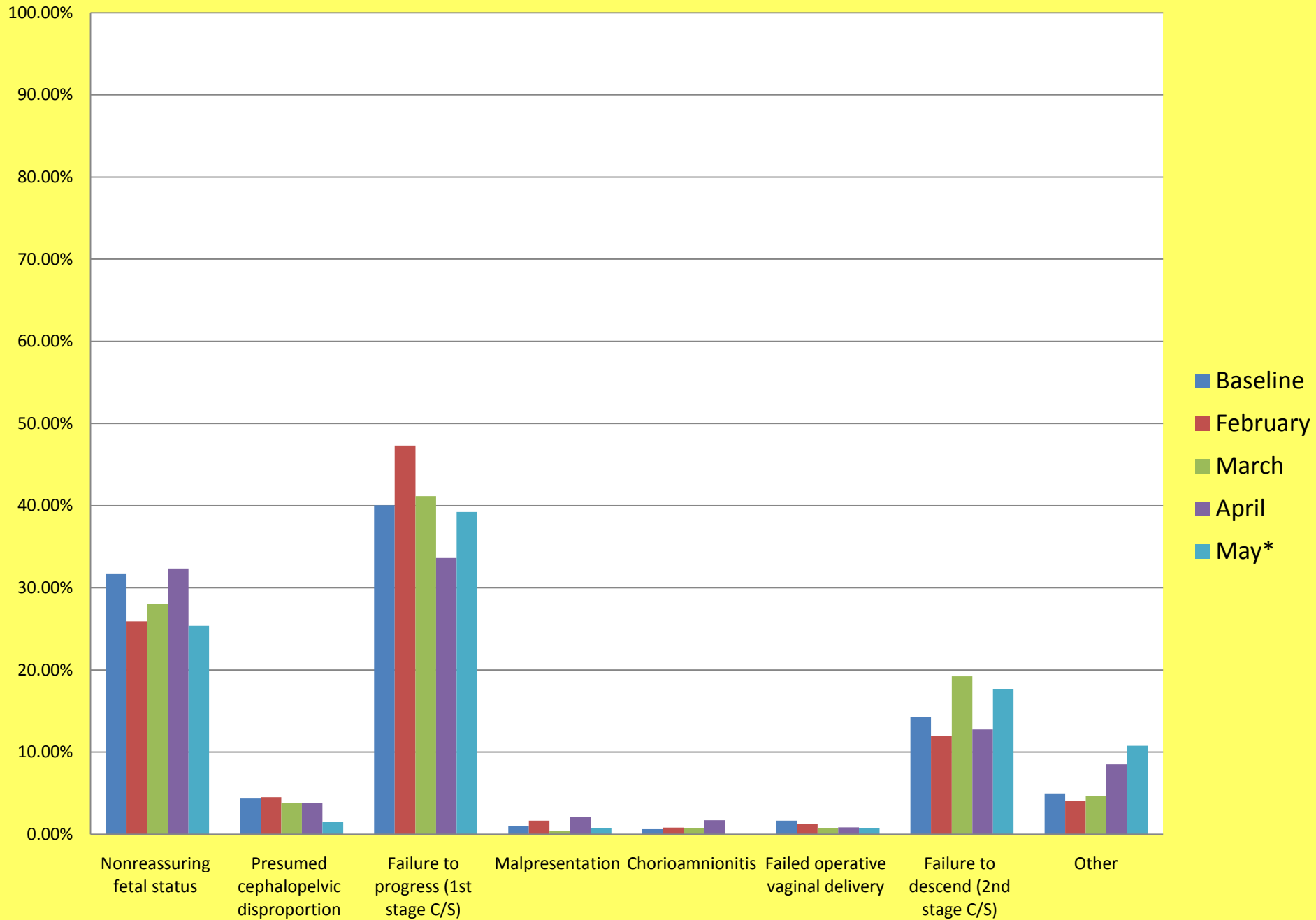
	Non-Labor Pts, No Risk Factors, No PROM			Non-Labor Pts, Risk Factors, No PROM		
0 cm	11.24%	223	36.32%	13.34%	290	57.59%
1-2 cm	15.57%	707	28.71%	24.89%	414	35.86%
3+ cm	66.28%	245	17.96%	6.16%	134	26.12%

	No Risk Factors, <41 Weeks / >41 Weeks					
	No Risk Factors, <41 Weeks, No PROM			No Risk Factors, >41 Weeks, No PROM		
Dilation at admission	%	n	C/S rate	%	n	C/S rate
0 cm	3.70%	154	38.96%	1.90%	79	34.18%
1-2 cm	17.97%	747	25.44%	6.47%	269	29.37%
3+ cm	34.15%	1420	10.63%	3.37%	140	21.43%

	No Risk Factors, <41 Weeks, in Labor, No PROM			No Risk Factors, >41 Weeks, in Labor, No PROM		
0 cm	0.30%	6	66.67%	0.20%	4	50.00%
1-2 cm	13.91%	276	21.38%	1.66%	33	21.21%
3+ cm	61.19%	1214	9.88%	5.09%	101	16.83%

	No Risk Factors, <41 Weeks, Not in Labor, No PROM			No Risk Factors, >41 Weeks, Not in Labor, No PROM		
0 cm	6.81%	148	37.84%	3.45%	75	33.33%
1-2 cm	21.67%	471	27.81%	10.86%	236	30.51%
3+ cm	9.48%	206	15.05%	1.79%	39	33.33%

PRIMARY INDICATION FOR CESAREAN



"Other" primary indications for c/s

Total	80
Failed induction	22
Elective	11
Macrosomia	8
Fetal intolerance to labor	6
Arrest of descent	5
Abruption	4
Bleeding	3

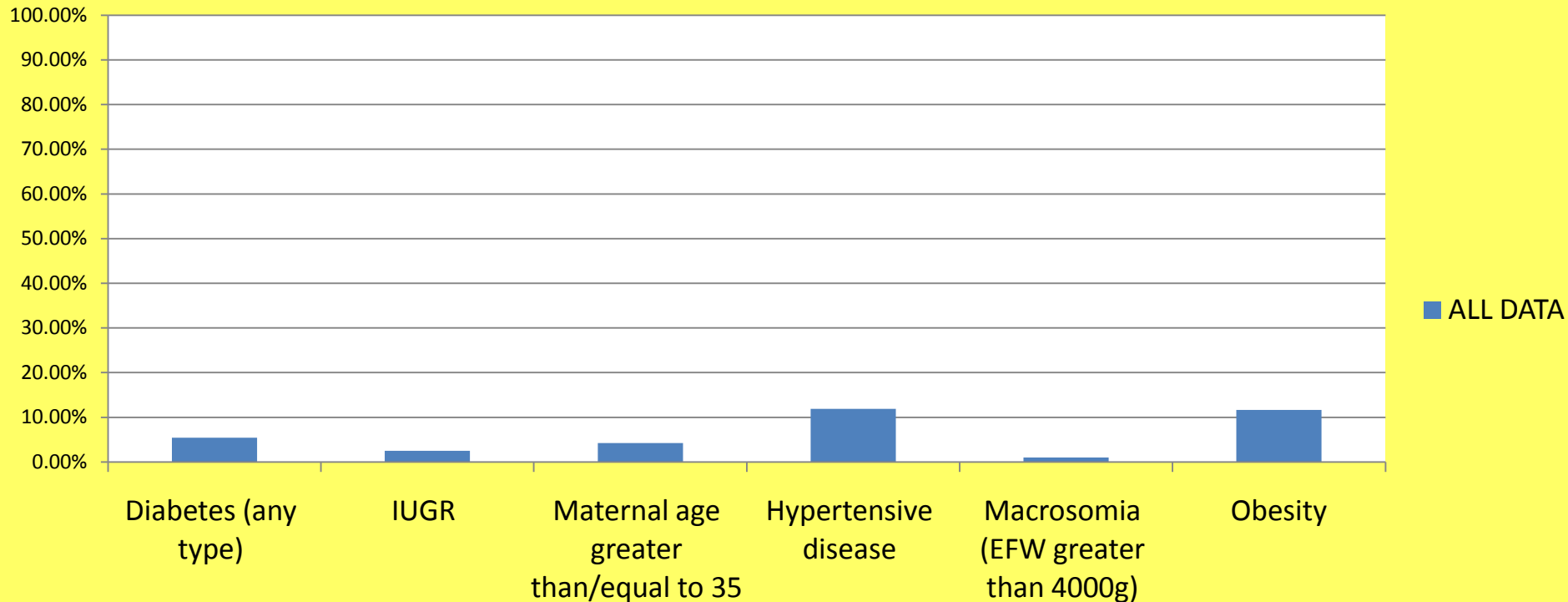
"Other" others:

- Panic Attack
- Severe Back Pain
- Breech
- Severe Pre-E
- Elevated Maternal Temp
- HELLP
- PIH
- Low-Lying Placenta
- Compound Presentation
- Prolonged Latent Phase
- Difficulty Breathing with Spinal
- Failed Forceps Delivery
- Prolonged ROM

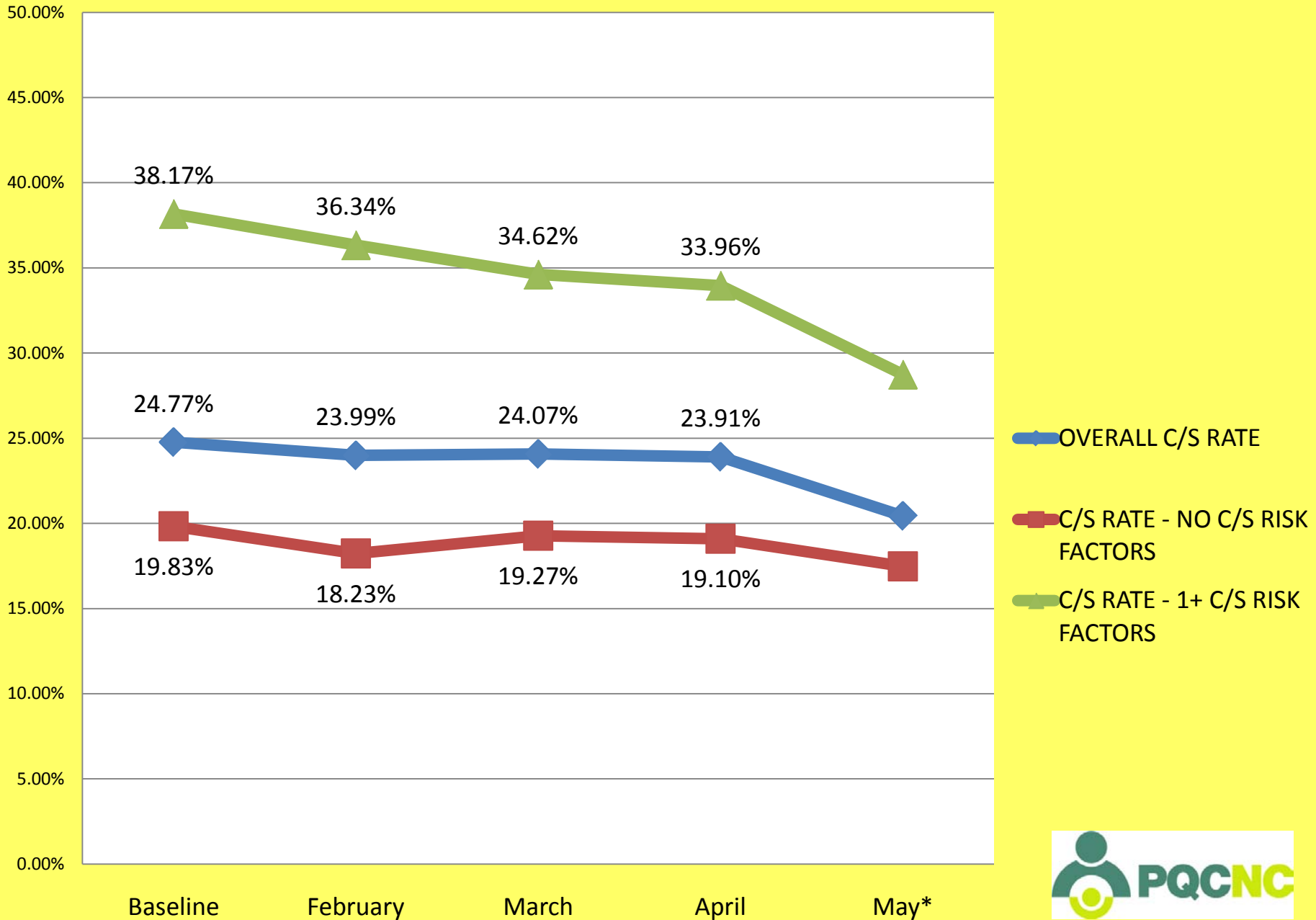
CESAREAN RISK FACTORS

- Diabetes (any type)
- IUGR
- Maternal age 35 or greater
- Hypertensive disease
- Macrosomia (EFW >4000g)
- Obesity

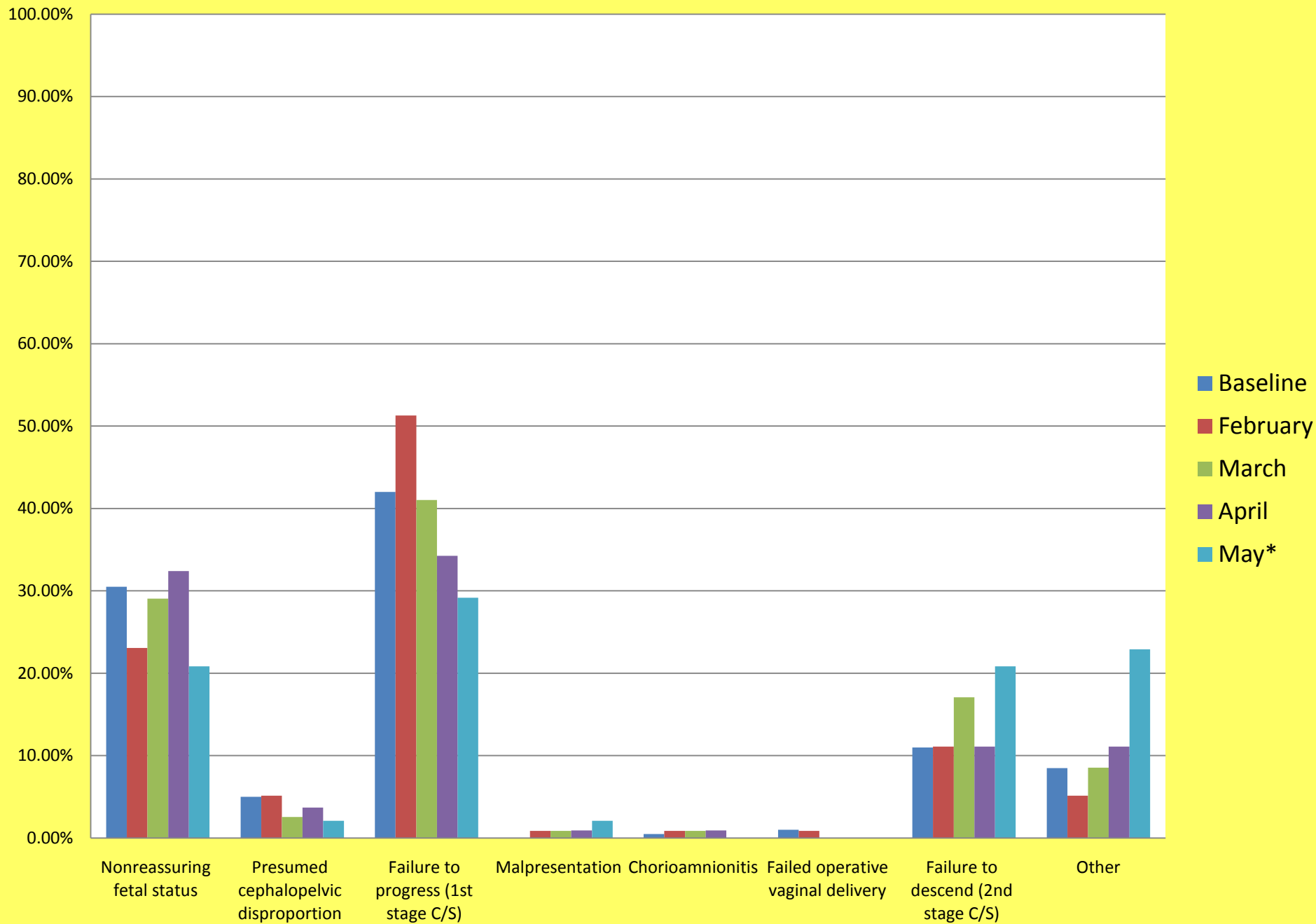
MATERNAL C/S RISK FACTORS



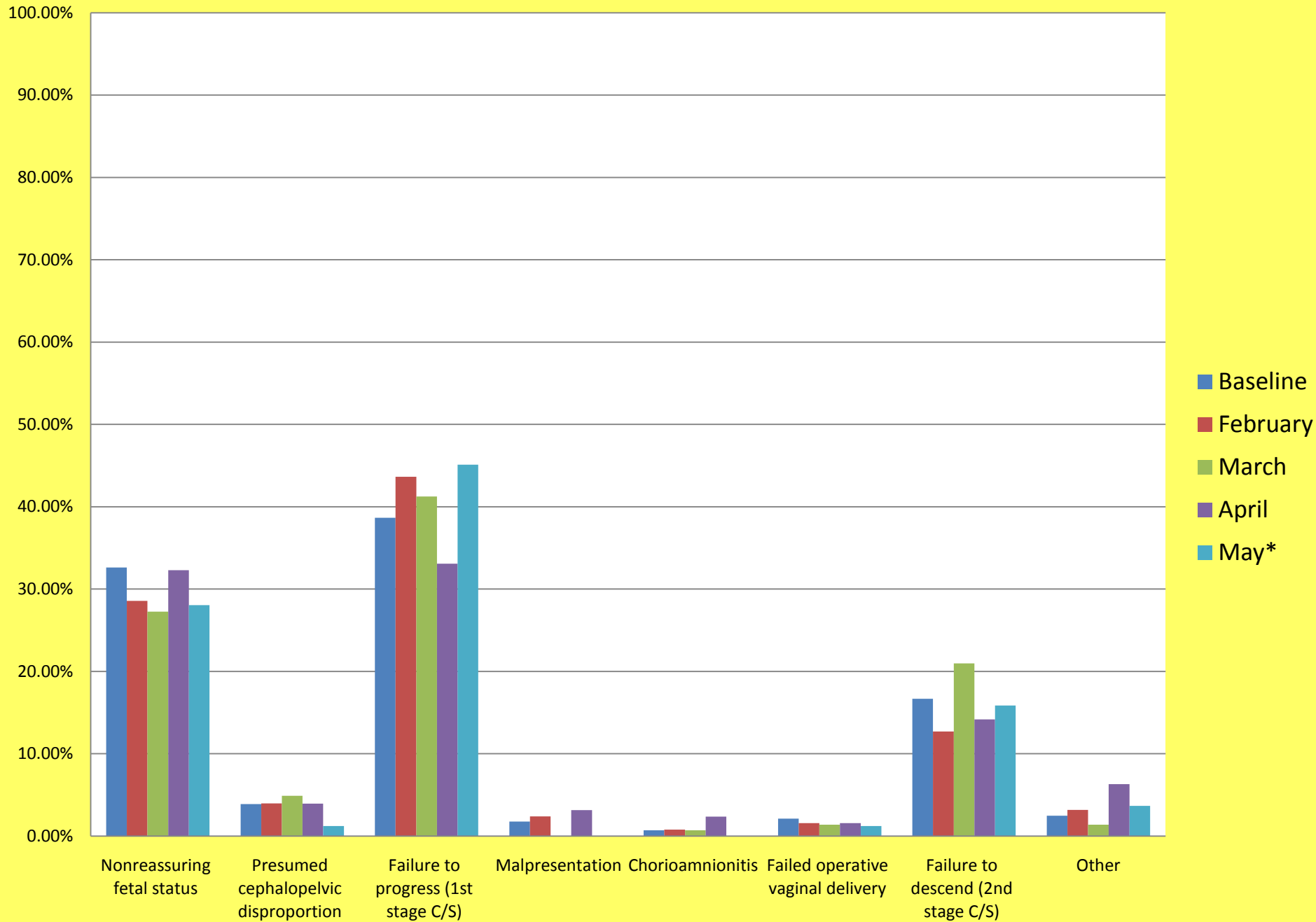
CESAREAN RATES



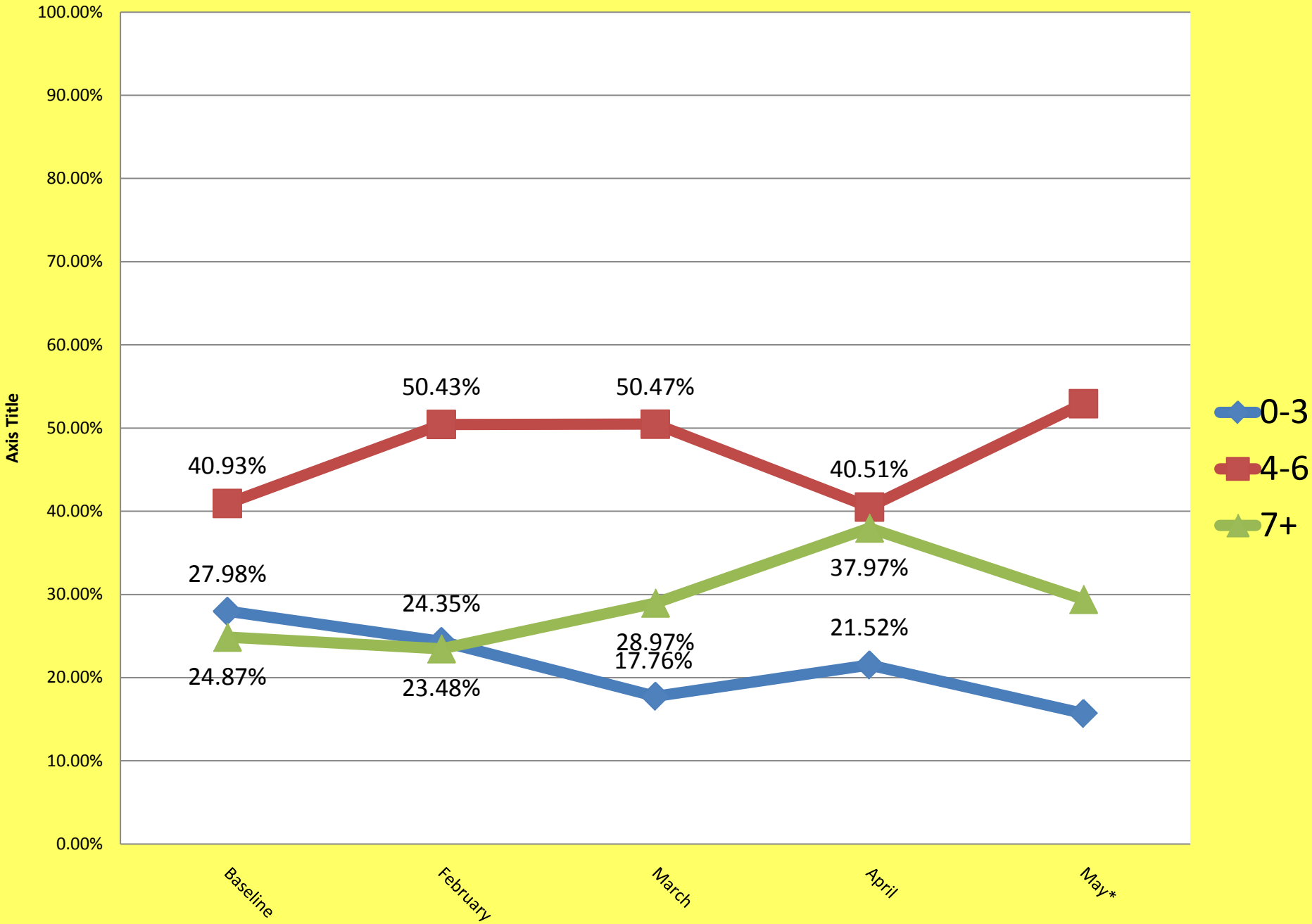
C/S INDICATION AMONG 1+ C/S RISK FACTORS



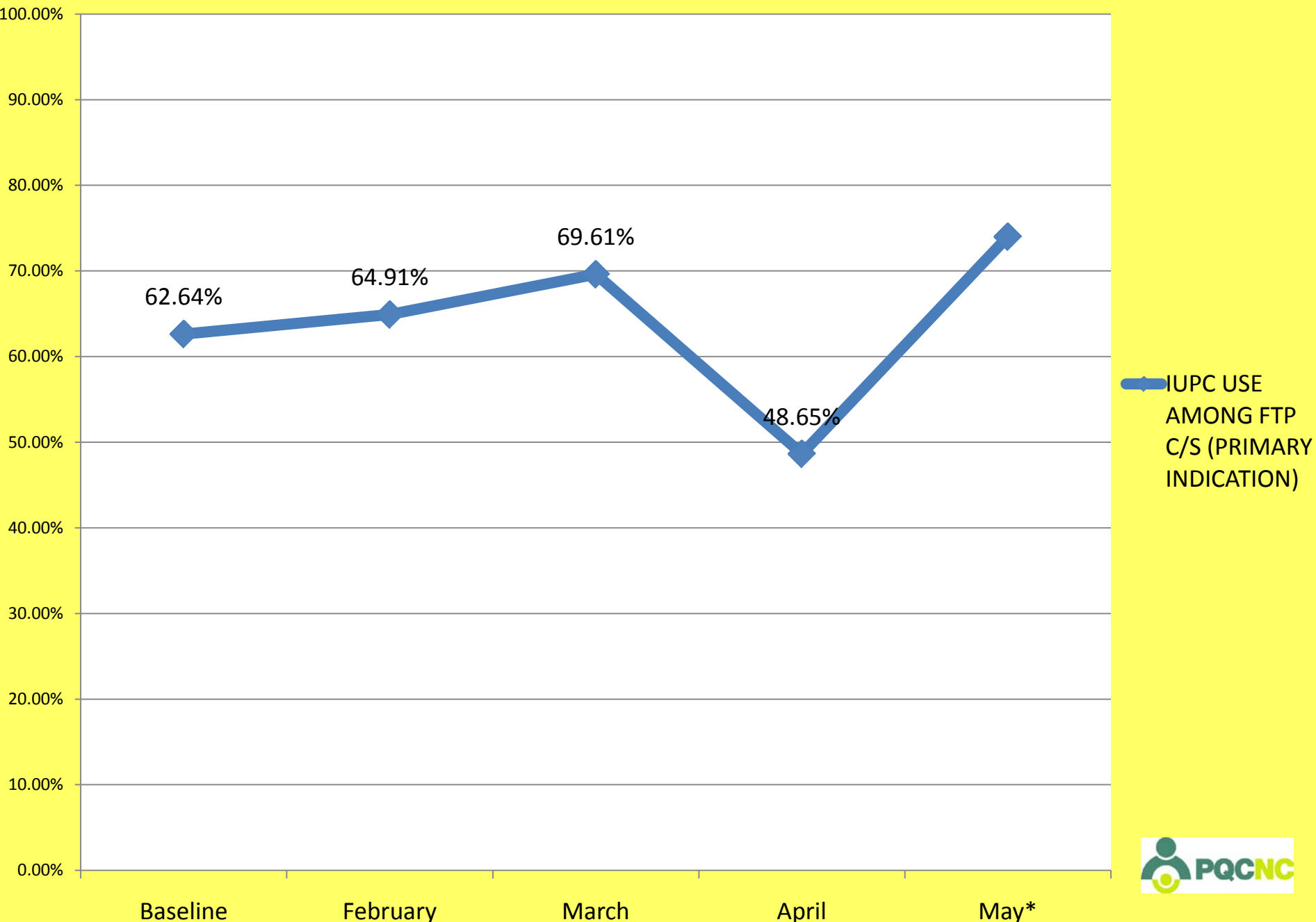
C/S INDICATION AMONG PTS WITH NO C/S RISK FACTORS



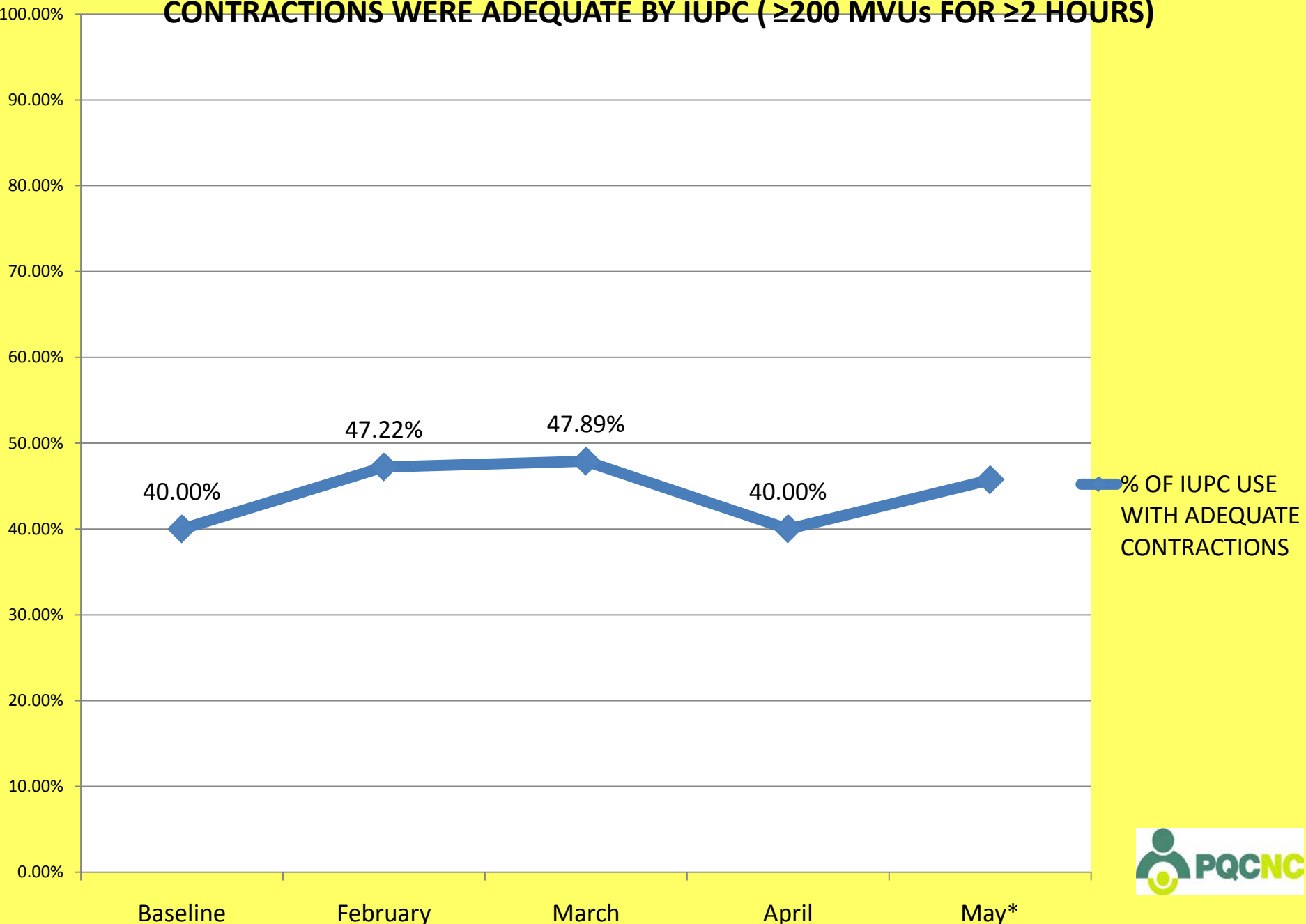
DILATION WHEN FAILURE TO PROGRESS DIAGNOSED



IUPC USE AMONG FAILURE TO PROGRESS C/S (PRIMARY INDICATION)



% OF PTS WHO HAD C/S FOR FAILURE TO PROGRESS WHOSE CONTRACTIONS WERE ADEQUATE BY IUPC (≥ 200 MVUs FOR ≥ 2 HOURS)



LABOR SUPPORT METHODS

