

SIVB all-team webinar – May, 2011

Good morning...

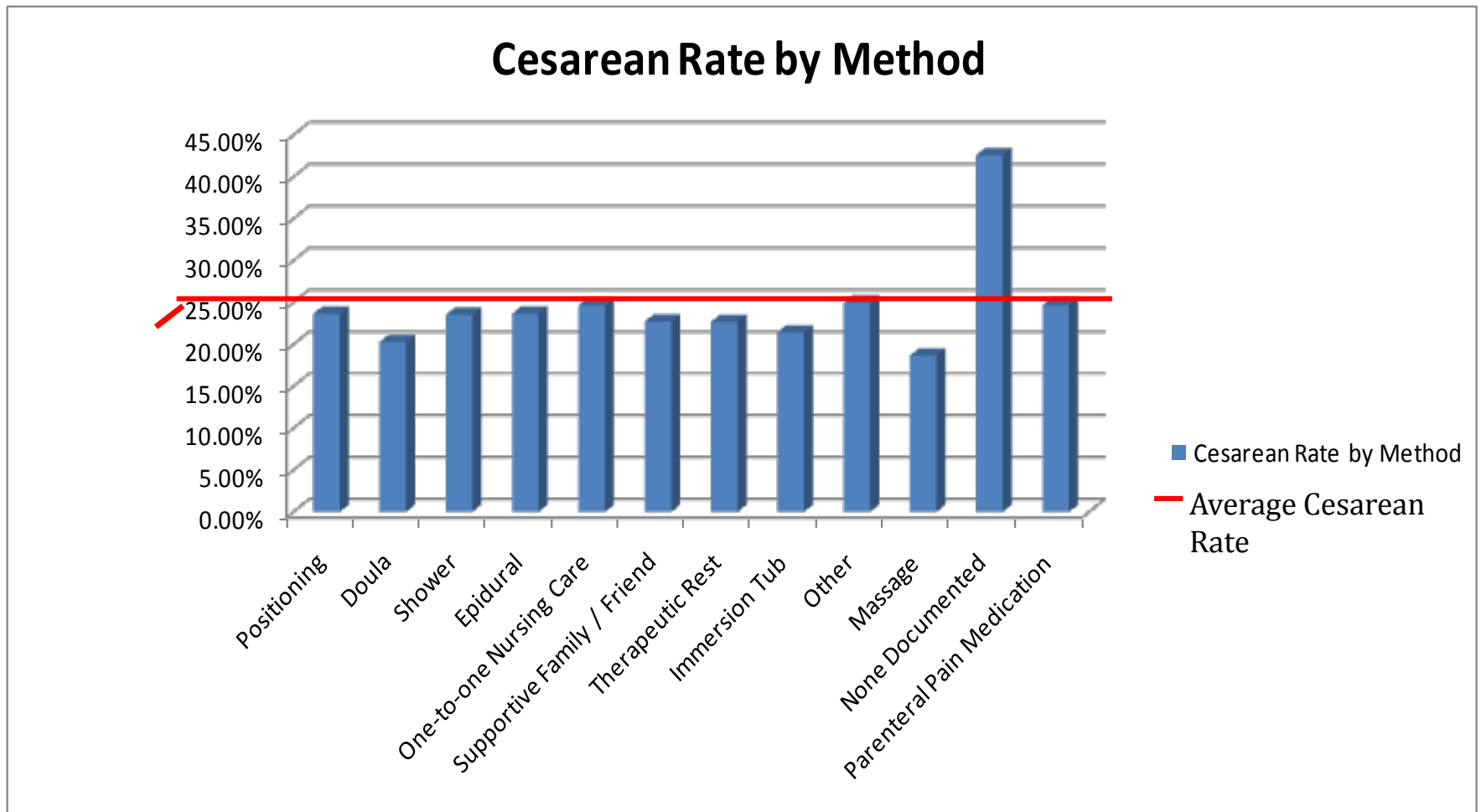
Please do not put this call on hold! Use the chat window at left to sign in: name of hospital, your name and any team members participating with you.



Agenda

Welcome/Introductions	Kate Berrien	7:30
Promoting vaginal birth – the midwifery model of care	Leigh Ann Joel, CNM	7:35
Data update – induction of labor and cervical ripening	Jessica Phipps	8:00
Report on the first year of The Joint Commission’s perinatal care measure set	Celeste Milton	8:20
Next steps	Kate Berrien	8:55

Labor Support methods



“None documented” = 115 patients

Data overview: laboring vs. not laboring at admission

	Percent	Number	C/S rate
Patients in labor at admission	49.04%	2432	15.42%
Patients NOT on labor at admission	50.94%	2526	33.06%
Of patients NOT in labor, PROM	22.09%	558	29.57%

Data: C/S rate by cervical dilation at admission among patients not in labor

Among patients NOT in labor at admission:

Dilation at admission	Percent	Number	C/S rate
0 cm	21.97%	555	47.39%
1-2 cm	58.63%	1481	31.20%
3+ cm	17.78%	449	20.27%

80.60% of patients not in labor at admission had a cervical dilation between 0-2cm.

Data: Cervical ripening vs. no cervical ripening

Cervical ripening among patients NOT in labor at admission

Dilation at admission	% with CR	Number	C/S rate	% without CR	Number	C/S rate
0 cm	78.20%	434	47.47%	21.80%	121	47.11%
1 cm	50.51%	492	35.57%	49.49%	482	32.99%
2 cm	20.51%	104	20.19%	79.49%	403	26.55%
3+ cm	6.90%	31	25.81%	93.10%	418	19.86%

Does PROM explain this data?

Cervical ripening among patients NOT in labor at admission

Dilation at admission	% with CR	% of those with CR who had PROM	C/S rate	% without CR	% of those without CR who were PROM	C/S rate
0 cm	78.20%	1.84%	47.47%	21.80%	65.29%	47.11%
1 cm	50.51%	2.85%	35.57%	49.49%	48.34%	32.99%
2 cm	20.51%	4.81%	20.19%	79.49%	26.05%	26.55%
3+ cm	6.90%	3.23%	25.81%	93.10%	25.12%	19.86%

Frequency of Cervical Ripening Methods (some data on effectiveness)

Cervical Ripening Methods											
	Cervidil	Misoprostol	Foley bulb	Low-dose oxytocin	Other	Extra amniotic infusion	Nipple Stimulation	Prepidil	Herbals/ homeopathic	Acupuncture	Laminaria
Rate of use (among patients with CR)	47.5%	31.4%	25.1%	6.7%	1.6%	0.74%	0.28%	0.19%	0.19%	0%	0%
Number of patients	510	337	270	72	N/A	N/A	N/A	N/A	N/A	N/A	N/A
C/S rate	41.2%	37.7%	39.3%	40.3%	N/A	N/A	N/A	N/A	N/A	N/A	N/A

Total number of patients with CR = 1075

Next steps

- ▶ Registration for final learning session: 17 hospitals currently registered, approximately 20 seats left.
 - ▶ Send Kate suggestions for roundtable/workshop topics at final learning session this week!
 - ▶ Future of SIVB initiative and PQCNC to be discussed on June 7...
- 